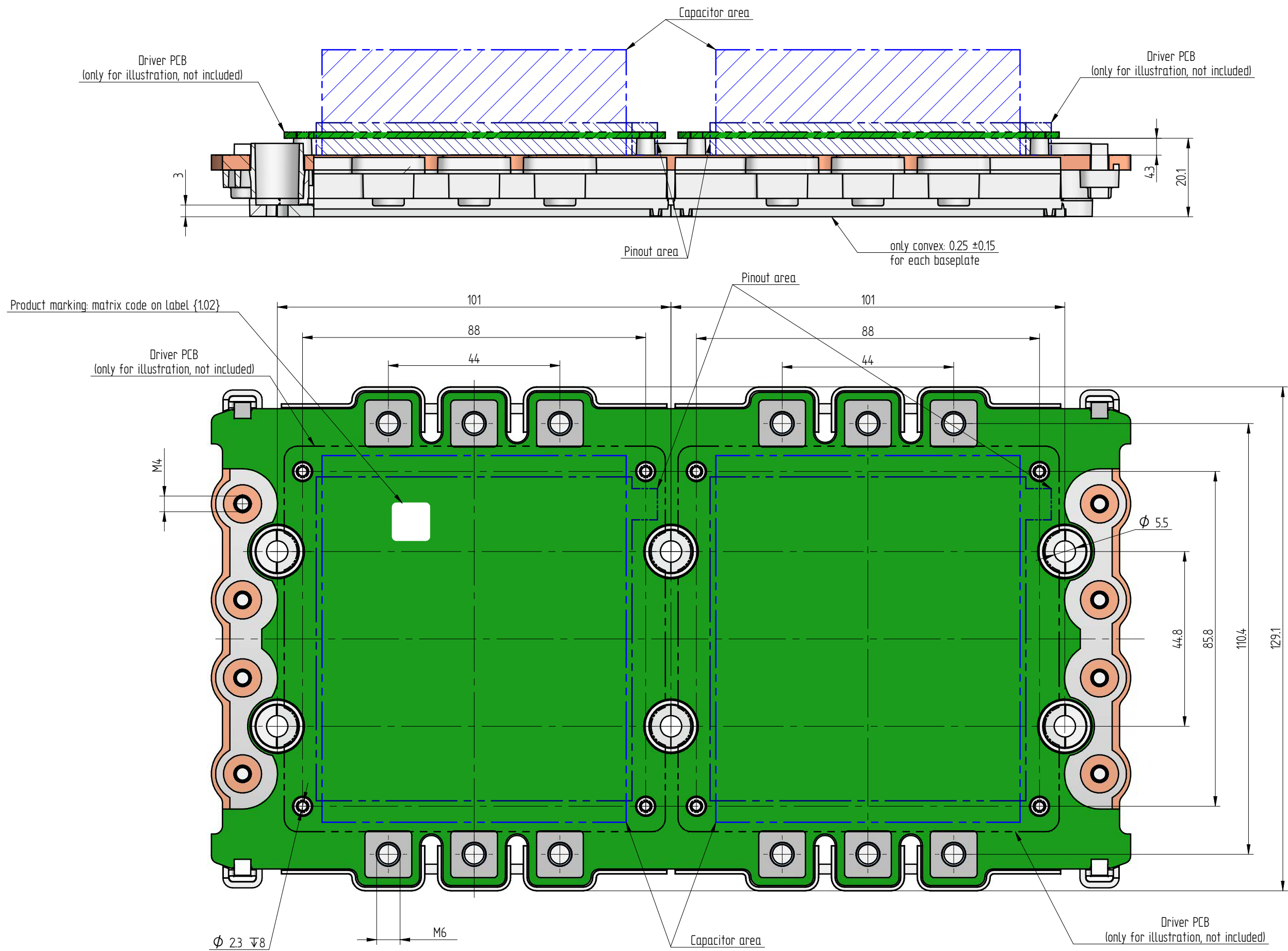


Proprietary data, company confidential. All rights reserved.



PCB specification according to the actual handling instruction document
 Refer to the module datasheet for actual pinout and 3D-CAD model
 Tolerance of pin positions $\pm 0.5\text{mm}$ at the end of the pins
 All dimensions are considered under unmounted condition

01.02.	14.07.2023	Product marking label placed	Pribéll T.	Gyimóthy Zs.	Package Drawing	View scale 1:1
01.01	16.12.2016	Update of drawing and product name	Buza M.	Géczy M.		
01	19.05.2015		Gyimóthy Zs.	Gyetvai T.	Page 1/1	VINcoX8-4T12*-PD
Rev.	Date	Alteration	Designed	Approved		
General tolerances ISO 2768 - m , K		Ps A3	Vincotech IP Development			
Linear dimensions		$x < 0.5 \pm 0.05$ $0.5 \leq x < 6 \pm 0.1$ $6 \leq x < 30 \pm 0.2$ $30 \leq x < 120 \pm 0.3$ $120 < x \pm 0.5$				
Chamfers, radii		$x < 0.3 \pm 0.05$ $0.3 \leq x < 0.5 \pm 0.1$ $0.5 \leq x < 3 \pm 0.2$ $3 \leq x < 6 \pm 0.5$ $6 < x \pm 1$				
References		Inspectional dim: Revision number (Rev.): *				
Drawing alteration in revision: {}						